

# Recipes that call for acids and brine mean tough conditions for plant surfaces.

In the long run, it takes an advanced coating system to cope with the demands of pickle production.

## Case study

### The Customer

Mt. Olive Pickle Company, Inc.

### The Contractor

Albers Industrial, Red Wing, Minnesota

### The Location

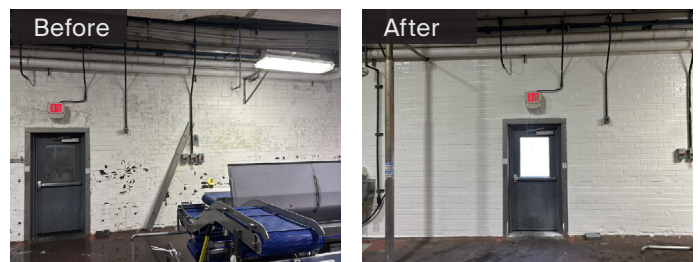
Mt. Olive, North Carolina

### The Challenge

The pickle industry has a built-in dilemma: The acids and brine that preserve the product also tend to eat away at the facilities where the pickling takes place. The Albers Industrial team discovered one example when they assessed the production area walls at the Mt. Olive Pickle Company. They found severe chipping and peeling on concrete masonry unit walls that had been coated, less than 12 months earlier, with a standard epoxy system. For the customer, the heat was on. To minimize downtime and keep production lines rolling, 5,000 square feet of walls had to be quickly stripped, primed and sealed with a reliable, long-lasting coating.

### The Solution

Albers Industrial had the answer. In just three days, all surfaces were prepped, abrasive blasted, primed with PPG AMERLOCK® 2 epoxy coating, and finished with the PPG SANISHIELD™ 3000/5000 system, which combines a spray-on, high-build aromatic polyurea base coat with an aliphatic polyurea topcoat formulated for fast return-to-service, ease of cleaning and high flexibility.



### The Benefits

Abrasion-resistant PPG SANISHIELD 3000/5000 polyurea is an effective wall and ceiling alternative to fiberglass and stainless steel. Its high film build provides excellent cleanability, and its resistance to chemicals, including most cleaning agents and disinfectants, is outstanding. It cures quickly, providing quick recoat times for fast return-to-service, while its flexibility reduces the need for sealants. With excellent color and gloss retention, PPG SANISHIELD coatings can remain smooth and bright for extended periods.

PPG SANISHIELD coatings are tested to the ASTM E-84 Standard for Flame Spread and Smoke Development Index; meet Class A or Class 1 requirements in accordance with the International Building Code and NFPA 101® Life Safety Code®; and deliver ultra-low (<17g/L) VOC.

### The Result

Because the PPG SANISHIELD 3000/5000 polyurea protective coating system is engineered to prevent issues like peeling paint, flaking rust, and blistering on porous substrates, the Mt. Olive Pickle Company (billed as the best-selling brand of pickles, peppers and relishes in the U.S.) can operate with greater confidence in a long-term solution designed to reduce the future frequency and cost of maintenance and repairs.

Visit [ppgmc.com](http://ppgmc.com) or contact:

Asia Pacific ☎ + 86-21-6025-2688 ✉ [ppgmc.ap@ppg.com](mailto:ppgmc.ap@ppg.com) | Europe, Middle East and Africa ☎ + 32-3-3606-311 ✉ [customers@ppg.com](mailto:customers@ppg.com)  
Latin America ☎ + 57-1-8764242 ✉ [ppgmc.andean.ca@ppg.com](mailto:ppgmc.andean.ca@ppg.com) | North America (US & Canada) ☎ + 1-888-9PPGPMC ✉ [PMCMarketing@ppg.com](mailto:PMCMarketing@ppg.com)  
Brasil ☎ +55-19-2103-6306 ✉ [CSPMCBR@ppg.com](mailto:CSPMCBR@ppg.com) | Created July 2023 | PM68649

No rights can be derived from the content of this publication. Unless otherwise agreed upon in writing, all products and technical advice are subject to our terms of sale, available on our website [ppgmc.com](http://ppgmc.com). © 2023 PPG Industries, all rights reserved. The PPG Logo and Amerlock are registered trademarks and PPG Sanishield is a trademark of the PPG Industries Ohio, Inc. All third-party registered marks are the property of their respective owners.

