

PPG SIGMACARE® PLUS

Online guide to maintenance at sea

Unique onboard management system for marine coatings.



PPG SIGMACARE® PLUS

Online guide to maintenance at sea



PPG SIGMACARE PLUS is a revolutionary online service tool designed to support onboard maintenance. We developed this interactive website to simplify coatings management for owners and operators of individual vessels and large fleets.

The system supports the use of our extensive range of marine coatings, including PPG VIKOTE™ and PPG SIGMARINE™ products.

PPG SIGMACARE PLUS improves performance and productivity with a unique range of commercial benefits:

- Unique inventory control and product ordering system, allowing vessels to place stock inquiries whilst at sea.
- Dynamic map shows which ports and products are available in real time.
- Creates tailored maintenance charts that can be used in a paint locker onboard a vessel.
- Allows for the inclusion of new-build specifications and dry docking reports to further streamline product delivery and service.
- Comes complete with manual and training videos on coating application.
- Available 24/7 with offline functionality to accommodate vessels with limited internet access at sea.

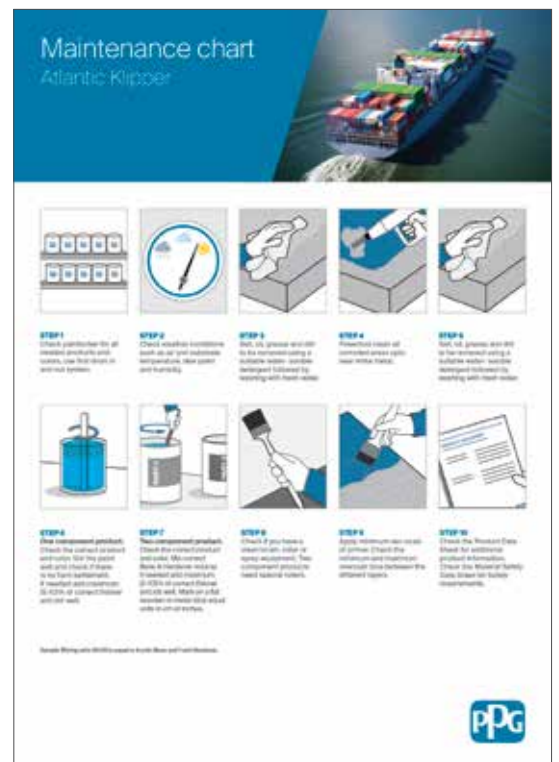


Simply more efficient

PPG was the first to offer an online shipboard maintenance tool for our paints and coatings. We have continued to refine PPG SIGMACARE PLUS since its launch in 2011 and today there are over 2,000 vessels using this system.

PPG SIGMACARE PLUS is all about taking away the complexity in managing all coating-related activities for a fleet. We believe that the simpler and clearer something is, the better it will work – and it does!

Contact your nearest sales office for more information.



Visit ppgmc.com or contact:

Asia Pacific ☎ +86-21-6025-2688 ✉ ppgmc.ap@ppg.com | Europe, Middle East and Africa ☎ +32-3-3606-311 ✉ customers@ppg.com

Latin America ☎ +57-1-8764242 ext. 201 ✉ ppgmcandean-ca@ppg.com | North America (US & Canada) ☎ +1-888-9PPGPMC ✉ PMCMarketing@ppg.com

